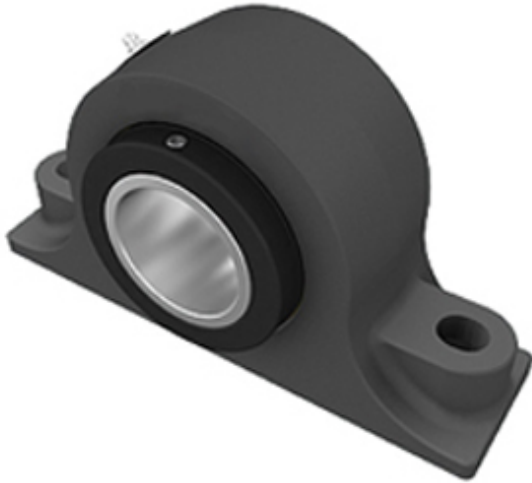




# TIMKEN BEARINGS POLSKA Sp.Z O.o.

2.75 Inch | 69.85 Millimeter x 4.5 Inch | 114.3 Millimeter x 3.125 Inch | 79.38 Millimeter  
**TIMKEN E-P2B-TRB-2 3/4 Pillow Block Bearings**



Bearing No. E-P2B-TRB-2 3/4

E-P2B-TRB-2 3/4 Bearing 2D drawings and 3D CAD models

Category	Pillow Block Bearings
Inventory	0.0
Manufacturer Name	TIMKEN
Minimum Buy Quantity	N/A
Weight	12.71
EAN	0053893593876
Product Group	M06288
Number of Mounting Holes	2
Mounting Method	Concentric Collar
Housing Style	2 Bolt Pillow Block
Rolling Element	Tapered Roller Bearing
Housing Material	Cast Iron
Expansion / Non-expansion	Non-expansion
Mounting Bolts	3/4 Inch
Relubricatable	Yes
Seals	Double Lip Radial
Housing Configuration	1 Piece Solid
Inch - Metric	Inch
Other Features	Double Row   Wide Inner Race   With Set Screw
Long Description	2 Bolt Pillow Block; 2-3/4" Bore; 3-1/8" Base to Center Height; Concentric Collar Mount; Tapered Roller Bearing; 9-5/16" Minimum Bolt Spacing; 9-11/16" Bolt Spacing Maximum; Relubr



## TIMKEN BEARINGS POLSKA Sp.Z O.o.

Category	Pillow Block
UNSPSC	31171511
Harmonized Tariff Code	8483.20.40.80
Noun	Bearing
Keyword String	Pillow Block
Manufacturer URL	<a href="http://www.timken.com">http://www.timken.com</a>
Manufacturer Item Number	E-P2B-TRB-2 3/4
Weight / LBS	28
Bolt Spacing Maximum	9.688 Inch   246.075Millimeter
Bolt Spacing Minimum	9.313 Inch   236.54Millimeter
Actual Bolt Center to Center	0 Inch   0Millimeter
d	2.75 Inch   69.85 Millimeter
B	3.125 Inch   79.38 Millimeter
D	4.5 Inch   114.3 Millimeter
Nominal Bolt Center to Center	9.5 Inch   241.3 Millimeter
Shaft Size	2.75 in
Shaft Size Type	Imperial
Weight	28 lb
UPC Code	053893593876
Dimension B	4-1/2 in
Dimension L	12 in
Dimension A	3 in
Dimension J Min.	9-5/16 in
Dimension J Max.	9-11/16 in
Bolt Diameter	3/4 in
Dimension N	27/32 in
Dimension N <sub>1</sub>	1 in
Dimension H <sub>1</sub>	1-7/8 in
Dimension H <sub>2</sub>	6-1/4 in



## TIMKEN BEARINGS POLSKA Sp.Z O.o.

Dimension $d_1$	4-23/32 in
Dimension H	3-1/8 in
e	0.46
X (if $F_a/F_r \leq e$ )	0.87
Y (if $F_a/F_r \leq e$ )	1.87
X (if $F_a/F_r > e$ )	0.7
Y (if $F_a/F_r > e$ )	2.26
K Factor	1.30
$C_{90}$ Dynamic Load Rating <sup>1</sup>	12300 lb
$C_0$ Static Load Rating	61200 lb
$F_{a-max}$ Maximum Permissible Thrust Load <sup>2</sup>	5181 lb
$F_{r-max}$ Maximum Allowable Slip Fit Radial Load <sup>3</sup>	10000 lb
Max. Speed <sup>4</sup>	2060 rpm
Note	Note: All units have a 1/8 pipe thread grease fitting The Maximum Permissible Thrust Load applies to conditions of slip fit with set screw mounting or in applications where a large moment loading occur